



TRACTIVE EFFORT.

Two speed hydrostatic drive provides optimal power on grade and for steep slope conditions. The dynamic braking system provides better control on slopes and reduces wear on the drive system while offering better tire life and improved ride characteristics.



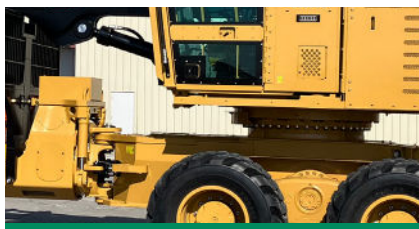
OPERATOR COMFORT.

Optimized cab, with new sloped roof line, maximizes operator experience through increased space, improved visibility, easier access, and options that include a heated and cooled seat, deluxe lights, and cameras. Machine controls feature an easy to use operator interface.



FAST AND POWERFUL CRANE.

The grapple and boom system are set up for fast, smooth, and powerful performance, with optimum reach, lift, and swing power. An optional heel for easy handling of large tree length timber further enhances the performance of the crane.



HEAVY DUTY STRUCTURES.

Designed in North America for tough, rugged conditions with a heavy-duty cast articulation hitch and reinforced bottom guards built to last. Common, oversized feller buncher swing bearing reduces stress load on the carbody and delivers strong swing torque for demanding applications.



BALANCE AND MANEUVERABILITY.

With a highly engineered wheel base design and optimized location of rear and front bogies, the F888 has an excellent turning radius for getting into tight areas. The balanced weight distribution provides a smooth ride for maximum operator comfort.



APPLICATION VERSATILITY.

The purpose built 360 degree full rotation upper house, balance of large carrying capacity, high swing torque, agility, and reach provides superior versatility for a variety of applications. Whether in-woods forwarding, hauling and placing mats for right-of-way or pipeline work, or hauling biomass to a chipper, the versatility maximizes longterm value.

F888 SPECIFICATIONS

ENGINE MODEL	Cat® C9.3B Stage 5	CRANE REACH	32'	9754 mm	GROUND CLEARANCE	27"	686 mm
GROSS POWER	338 hp 252 kW	LIFT AT MAX REACH	6,300 lb	2 858 kg	TRANSPORT WIDTH	128"	3251 mm
ENGINE SPEED	2000 rpm	SWING TORQUE	51,078 lbf-ft	69.3 kNm	WHEEL BASE	240"	6096 mm
WEIGHT	63,000 lb 28 576 kg	BUNK LENGTH	213"	5410 mm	HEIGHT	149"	3785 mm
FUEL TANK CAPACITY	100 gal 379 L	BUNK WIDTH	109"	2769 mm	LENGTH	398"	10.1 m
TRACTIVE EFFORT	67,320 lbf 299.5 kN	TURNING ANGLE	42°		PAYLOAD CAPACITY	44,000 lbs	19 958 kg
TRANSPORT SPEED	15 mph 24.1 km/h						

POWERTRAIN

Cat C9.3B engine certified to EPA Stage 5
Hydrostatic ground drive
NAF 66.5" unbalanced bogie axles (1689 mm)

HYDRAULICS

Load sense, pressure compensated valves
Hydraulic tank vacuum pump
Hydraulic tank electric fill pump
Variable speed hydraulic cooling fan

ELECTRICAL

115 ampere alternator
24-volt electrical system with 2 x 12-volt batteries
Main disconnect switch with Diesel Exhaust Fluid (DEF) purge indicator light
Weiler control and programming system
Cat Product Link™ ready
Lockable ground disconnect switch

OPERATOR ENVIRONMENT

FOPS/OPS/ROPS operator's cab w/ heat and A/C
Heated & cooled suspension seat with harness seat belt
AM/FM/Bluetooth Radio
24V to 12V converter, 12V power port, and 2xUSB ports
8 machine mounted LED work lights
Touchscreen display monitor and programmable operator controls
Rear camera
Front & top sun screens

OTHER STANDARD EQUIPMENT

Articulating and oscillating frame
Cast knuckle articulation w/ tapered roller bearings
Continuous upper rotation
Power opening rear engine door with service platform

OPTIONAL EQUIPMENT

Blade
Product Link™ (PL243 Cellular or PL631 Satellite)
Ether Starting Aid
Arctic Preheater
Nokian 710-45-26.5 F2 24 ply Tire
Nokian 750-55-26.5 F2 24 ply Tire
Nokian 710-45-26.5 F-2 24 ply Spare Tire
Nokian 750-55-26.5 F-2 24 ply Spare Tire
Epsilon FG37 Grapple [area = 3.87 ft² (0.36 m²)]
Epsilon FG43S Grapple [area = 4.30 ft² (0.40 m²)]
Hultdins 360 Grapple [area = 4.84 ft² (0.45 m²)]
Hultdins 360S Grapple [area = 4.84 ft² (0.45 m²)]
Weiler SG360S Grapple [area = 4.84 ft² (0.45 m²)]
60 ft² Wood Bunk (5.2 m²)
60 - 67 ft² Variable Wood Bunk (5.5 - 6.25 m²)
32' Boom & Stick
26' Boom & Stick w/ 6' hydraulic stick extension w/ Rotator
Fixed Heel

SALES AND SERVICE

Sold and serviced exclusively through Weiler Forestry dealers worldwide.

WARRANTY

12 months standard. Extended warranty available.