

K561 STATIONARY KNUCKLEBOOM LOADER



PILOT CONTROLS.

The optional left side mounted cab features a large, fully adjustable suspension seat with lumbar support, fold-up armrests with hydraulic pilot joystick controls, and a rocker swing pedal for ease of operation and increased performance. On board electric power unit is standard.



ON BOARD POWER UNIT.

The on board electric power supply and hydraulics allow for continuous or non-continuous rotation. This configuration also provides a space saving installation as all components are mounted on the loader with only the electrical harnesses routed up the mounting structure.



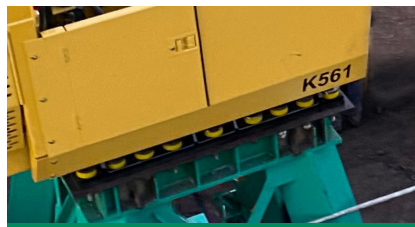
REMOTE POWER UNIT.

Remote electric power supply and hydraulics are placed on the ground for easier service access to the electric motor, hydraulic pumps and hydraulic valve. Hydraulic hoses are routed up the mounting structure through the center of the loader. Available in limited rotation only.



REMOTE CONTROL OPERATION.

Loaders with optional remote controls are designed with electric over hydraulic (EHC) joysticks with proportional controllers that enable the loader to be operated from a remote location. Specially designed multi-conductor cables ensure reliable signal continuity.



RESILIENT PAD MOUNTING.

The Resilient Pad Mounting System includes a set of special rubber isolators on each mounting fastener that absorbs stress in two directions. An additional hydraulic accumulator is built into the main boom cylinder circuit to further absorb peak-load shocks.



BOOM LENGTH OPTIONS.

Heavy-duty boom options range from 30' (9.1 m) to 38' 6" (11.7 m) for handling short wood as well as fixed and live heel options for handling tree length stems.

K561 SPECIFICATIONS

Gross Power	100 hp	75 kW
Electric Motor Options	380 Volt / 50 Hz	
	460 Volt / 60 Hz	
	575 Volt / 60 Hz	
Weight*	32,000 lb	14,515 kg

*Weight includes on board electric power w/remote operator controls, 32' 6" boom, extended V heel and 4548 SN grapple

System Pressure	2500 psi	172 bar
Swing Pressure	2500 psi	172 bar
Swing Speed	7 rpm	
Swing Bearing Diamter (O.D.)	54"	1372 mm
Hydraulic Reservoir	142 gal	538 L

CONFIGURATIONS

1. On Board Electric Power w/
Operator's Cab on loader with pilot joystick controls
2. On Board Electric Power w/
Remote Operator's Station with electric over hydraulic controls
3. Remote Electric Power w/
Remote Operator's Station with electric over hydraulic controls

NOTE: It is the customer's responsibility to provide the remote operator's station for configurations 2 & 3.

MOTOR POWER SUPPLY

100 hp (75 kW) @ 1800 rpm electric motor
380 Volt / 50 Hz Electric Power Supply option
460 Volt / 60 Hz Electric Power Supply option
575 Volt / 60 Hz Electric Power Supply option
Four ring high voltage / auxiliary low voltage collector ring
NEMA 12 enclosure service panel
Direct pump drive through flex coupling
Magnetic starting system

HYDRAULICS

Three in-line gear pumps
45-54-16 gpm (170-204-61 L/min) of flow
Radial piston swing motor
142 gal (538 L) hydraulic reservoir

OPERATOR CAB - OPTIONAL

Left side mounted enclosed cab
19" (483 mm) or 55" (1397 mm) cab riser options
SAE or Forestry control pattern
Pressurized with heat and air conditioning
Adjustable seat with arm rests
Dual pilot joystick controls with foot pedal swing
Reverse slope tinted windshield
Windshield wiper
Lexan skylight
Sunshade
AM/FM radio

MOUNTING KITS

Steel Platform (includes mounting bolts, lock nuts, washers, shock pads)
Concrete Pad (includes J-hook bolts, lock nuts, washers, shock pads)
Optional 30" (762 mm) Subframe Riser for concrete installations
NOTE: Steel platform and/or concrete pad design are the responsibility of the customer.

BOOM OPTIONS

30' (9.1 m) Standard Boom and Stick
32' 6" (9.9 m) Standard Boom and Stick
36' (11.0 m) Standard Boom and Stick
38' 6" (11.7 m) Standard Boom and Stick
30' (9.1 m) Live Heel Boom and Stick
33' 6" (10.2 m) Live Heel Boom and Stick

OPTIONAL EQUIPMENT

4548 Straight Narrow Jaw Grapple
4548 Tapered Wedge Jaw Grapple
5055 Straight Narrow Jaw Grapple
5055 Tapered Wedge Jaw grapple
Single "V" Heel
Double "V" Heel
Boom Central Grease Location
Hydraulic Tank Heater
Counterweight

SALES AND SERVICE

Sold and serviced exclusively through Weiler Forestry dealers worldwide

WARRANTY

12 months standard